



RIAS AWARDS 2012

THE INAUGURAL RIAS AWARDS WERE PRESENTED AT THE GLASGOW HILTON HOTEL ON WEDNESDAY 20TH JUNE. 18 AWARDS RECOGNISED BUILDINGS THE LENGTH AND BREADTH OF SCOTLAND, FROM A MODEST BIRD HIDE TO A MAJOR NEW LOCAL AUTHORITY HQ.

THE JUDGES, SHOLTO HUMPHRIES PRIAS, ROBERT DYE RIBA, DR ANNE LORNE GILLIES HON FRIAS AND PETER WILSON COMMENDED THE QUALITY AND INNOVATION OF THIS REMARKABLE RANGE OF PROJECTS.

RIAS AWARDS 2012

Doolan 2012
SHORTLIST

BOGBAIN MILL, LOCHUSSIE, BY MARYBURGH RURAL DESIGN

This ingenious conversion of a rural mill creates a home within a landscaped setting which draws upon its industrial history to create a delightful contemporary living space. Existing walls create a series of sheltered garden courtyards. The plan is typically one room deep, with simple linear circulation. The existing fabric has been respected, incorporated, amended and extended without resorting to pastiche.



MICHAEL MCGURK



ALAN DICKSON, RURAL DESIGN / SHOLTO HUMPHRIES PRIAS / DONALD NICHOLSON

ALAN DICKSON



Doolan 2012
SHORTLIST

CAPE COVE, SHORE ROAD, HELENSBURGH CAMERON WEBSTER ARCHITECTS



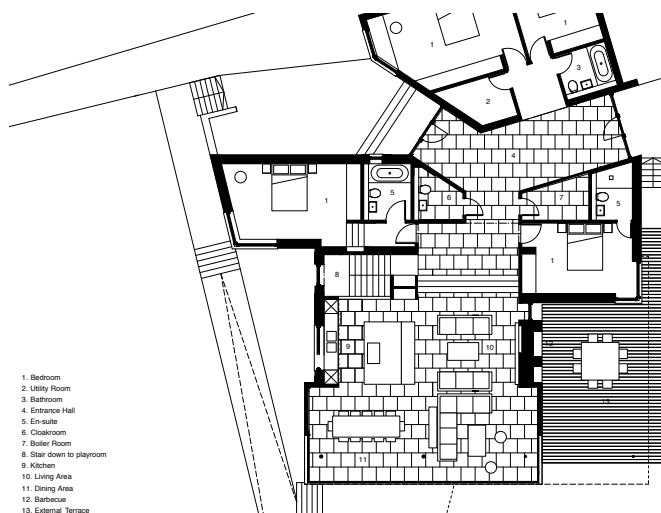
MICHAEL MCGURK

STUART CAMERON, CAMERON WEBSTER ARCHITECTS / SHOLTO HUMPHRIES PRIAS / ALASTAIR MORRISON

At the water's edge, this home commands superb views across Loch Long. It rises from its natural rock foundations as an uncompromising and alluring work of modernity. The original plan has been completely reconfigured to create a large and sunny entrance hall. Kitchen and dining were moved upstairs and extended with full height frameless glazing. Simple materials and colours were used throughout.



DARPLE PHOTOGRAPHY



RIAS AWARDS 2012

CORINTHIAN CLUB, GLASGOW

G1 GROUP

CLIENT: G1 GROUP

Doolan 2012
SHORTLIST

DUNDEE HOUSE

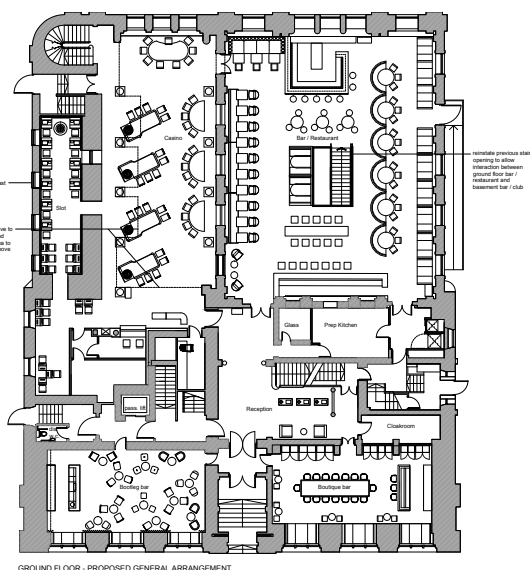
REIACH AND HALL ARCHITECTS

CLIENT: DUNDEE CITY COUNCIL

RENZO MAZZOLINI PHOTOGRAPHY



The major second phase of work to this superb historic building, a decade on from the original conservation project, has created bars, restaurants, a casino, a club and lettable conference suites of real opulence. New access stairs connect the ornate 'Tellers Hall' and the vaulted brick basement. Simple, clean, contemporary materials serve as a foil to the building's historic fabric.



GROUND FLOOR - PROPOSED GENERAL ARRANGEMENT

Set within a previously run down part of the city centre, this important development transforms an historic printing works into a large administration and public services building. Behind the historic façade are seven storeys of modern office space. The City Council's new headquarters symbolises Dundee's aspirations to celebrate its industrial heritage and create appropriate new architecture which signals its vision.



DAVE MORRIS



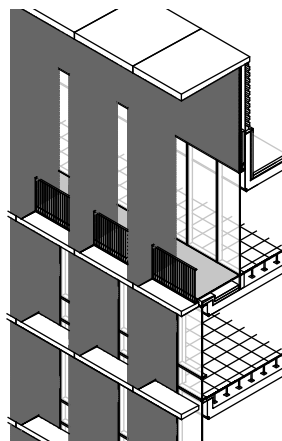
MICHAEL MCGURK

SHOLTO HUMPHRIES PRIAS / NICK O'NEILL RIAS AND GRANT WOOD RIAS, REIACH AND HALL

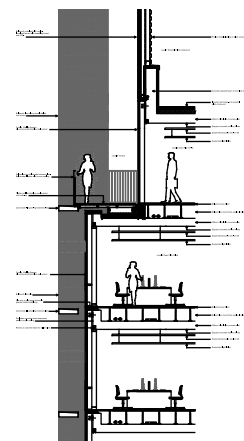
MICHAEL MCGURK



STEFAN KING HON PRIAS / SHOLTO HUMPHRIES PRIAS / DAVID SCANLON RIAS



SECTION - 01/10/12



SECTION - 01/10/12

SECTION - 01/10/12

FORE STREET, GLASGOW HYPOSTYLE ARCHITECTS

CLIENT: WHITEINCH + SCOTSTOUN HOUSING
ASSOCIATION LTD

Doolan 2012
SHORTLIST

FORTH VALLEY COLLEGE OF FURTHER & HIGHER EDUCATION, ALLOA CAMPUS

REIACH AND HALL ARCHITECTS
CLIENT: FORTH VALLEY COLLEGE

Doolan 2012
SHORTLIST

MICHAEL MCGURK

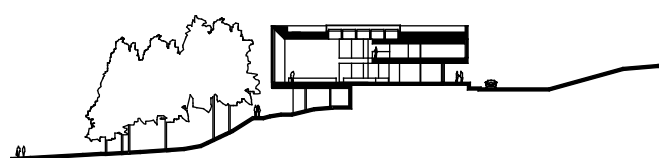


DAVE SHERRY, WHITEINCH + SCOTSTOUN HOUSING ASSOCIATION / GERRY HENAUGHEN RIAS, HYPOSTYLE ARCHITECTS / SHOLTO HUMPHRIES PRIAS

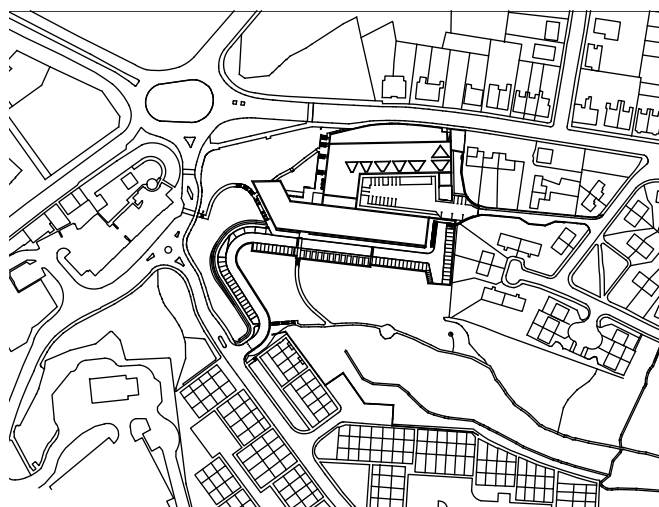
This new community sits within the embrace of the historic tenemental landscape. A new build 5-storey block of flats on Fore Street maintains the scale of the street. The backcourt comprises a series of 2-storey houses and cottage flats. Bright, welcoming and ingeniously woven into the existing fabric of the city, these new homes are a useful model for the future.



1. LIVING / DINING
2. KITCHEN
3. HALL
4. BEDROOM 1
5. BEDROOM 2
6. BATHROOM
7. STORE
8. WARDROBE



Within a wooded hilltop landscape close to Alloa town centre this new college is both inviting and stimulating. It is designed to encourage social interaction between learners and staff from different disciplines. The plan responds to pragmatic issues such as flat ground (for workshops and service yard) and safe vehicle access. Embracing views to the Ochils, this is a powerfully expressive new focus for the town.



TOM MANLEY



SHOLTO HUMPHRIES PRIAS / ANDY LAW FRIAS, REIACH AND HALL / TOM GORMAN, FORTH VALLEY COLLEGE / MARK DAWSON RIAS, REIACH AND HALL

MICHAEL MCGURK

RIAS AWARDS 2012

GRÖDIANS, LERWICK

RICHARD GIBSON ARCHITECTS

CLIENT: HJATLAND HOUSING ASSOCIATION LTD

This carefully composed housing development, providing homes for over 100 people, combines a variety of differently sized buildings set at varying angles to the street. The use of colour contributes to the delivery of a strongly urban composition, unusual for this type of development. This careful yet engaging new addition to Shetland's housing stock is understated but highly visually appealing, brightening the landscape and amenity of Lerwick.



HEATHFIELD PRIMARY SCHOOL, AYR

HOLMES MILLER

CLIENT: SOUTH AYRSHIRE COUNCIL

Doolan 2012
SHORTLIST



CLARA GARRIGA SERRANO RIAS, HOLMES MILLER / SHOLTO HUMPHRIES PRIAS / CALLUM HOUSTON RIAS, HOLMES MILLER



Combining an established school with a substantial new extension was a particular challenge. The redevelopment respects the scale of the original frontage, removes the clutter to the rear and meshes the existing building with a new dining hall and external courtyard. Simple elements deliver clean, crisp, elegant lines. The contemporary architectural appearance, contrasts with, yet complements, the original building, delivering an excellent environment for nurturing young minds.



PHATSHEEP



MICHAEL MCGURK

ANDREW LEE